

2025

Mainz

Product Catalogue

Stainless steel wire, fittings, hardware and tools for wire balustrades

Stainless steel wire



Stainless steel hardware and fittings



Tools

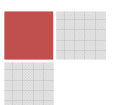


Table of Contents

Stainless Steel Wire	3
Stainless Steel Fittings	4
Open Turnbuckles	4
Closed Turnbuckles	5
Swageless Fittings	6
Terminals.....	8
Eye Screws.....	9
Saddles	9
Eye Plates	10
Eye Bolts.....	10
Thimbles	11
Ferrules	12
Screws	12
Pop Rivets.....	13
Nuts	13
Washers	13
Rivet Nuts.....	14
Greenwall, Tensioners, Inserts.....	14
D Shackles	15
Snap Hooks, Quick Links.....	15
D Rings.....	16
Wire Rope Clips, Threaded Rod, Chain,	17
Cable Grippers	18
Drill Bits, Plugs, Antisieze	19
Tools	20
Crimping tools.....	20
Wire Cutting tools	20
Rivet Nut Insert Tool, Riveter, Hex Keys, tension gauge,	21

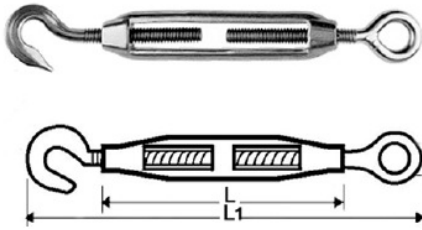
Stainless Steel Wire

Stock Code	Construction	Grade	Size mm	Roll Length mtr	Price
707010-305M	7 x 7	316	1	305	\$115
707012-305M	7 x 7	316	1.2	305	\$126
7070124-305M	7 x 7	304	1.2	305	\$126
707010-12C-305M	7 x 7 PVC coated	316	1 – 1.2	305	\$120
707012-15C-305M	7 x 7 PVC coated	316	1.2 – 1.5	305	\$130
7070154-305M	7 x 7	304	1.5	305	\$137
119015-305M	1 x 19	316	1.5	305	\$180
707015-2C-305M	7 x 7 PVC coated	316	1.5 – 2	305	\$190
707016-305M	7 x 7	316	1.6	305	\$140
707020-305M	7 x 7	316	2	305	\$190
707020-30C-305M	7 x 7 PVC coated	316	2 - 3	305	\$200
707025-305M	7 x 7	316	2.5	305	\$220
119025-305M	1 x19	316	2.5	305	\$300
707025-35B-305M	7 x 7 PVC coated Black	316	2.5 – 3.5	305	\$300
707032-305M	7 x 7	316	3.2	305	\$250
119032-305M	1 x19	316	3.2	305	\$370
719032-305M	7 x19	316	3.2	305	\$440
707032-5C-305M	7 x 7 PVC coated	316	3.2 - 5	305	\$440
707040-305M	7 x 7	316	4	305	\$450
119040-305M	1 x19	316	4	305	\$590
719040-305M	7 x19	316	4	305	\$620
707050-305M	7 x 7	316	5	305	\$655
119050-305M	1 x19	316	5	305	\$870
707060-305M	7 x 7	316	6	305	\$1100
119060-305M	1 x19	316	6	305	\$1300
707080-305M	7x7	316	8	305	\$1800

Stock Code	Construction	Grade	Size mm	Price Per metre
707010-1M	7 x 7	316	1	\$0.50
707012-1M	7 x 7	316	1.2	\$0.60
7070124-1M	7 x 7	304	1.2	\$0.60
707010-12C-1M	7 x 7 PVC coated	316	1 – 1.2	\$0.70
707012-15C-1M	7 x 7 PVC coated	316	1.2 – 1.5	\$0.70
7070154-1M	7 x 7	304	1.5	\$0.70
119015-1M	1 x 19	316	1.5	\$0.90
707015-2C-1M	7 x 7 PVC coated	316	1.5 – 2	\$0.80
707016-1M	7 x 7	316	1.6	\$0.70
707020-1M	7 x 7	316	2	\$0.90
707020-30C -1M	7 x 7 PVC coated	316	2 - 3	\$1.00
707025-1M	7 x 7	316	2.5	\$1.00
119025-1M	1 x 19	316	2.5	\$1.20
707025-35B-1M	7 x 7 PVC coated Black	316	2.5 – 3.5	\$1.50
707032-1M	7 x 7	316	3.2	\$1.25
119032-1M	1 x 19	316	3.2	\$1.75
719032-1M	7 x 19	316	3.2	\$2.20
707032-5C-1M	7 x 7 PVC coated	316	3.2 - 5	\$2.20
707040-1M	7 x 7	316	4	\$2.20
119040-1M	1 x19	316	4	\$2.85
719040-1M	7 x19	316	4	\$3.10
707050-1M	7 x 7	316	5	\$3.30
119050-1M	1 x 19	316	5	\$3.80
719050-68B-1M	7 x 19 PVC coated Black	316	5-6.8	\$10
707060-1M	7 x 7	316	6	\$5.50
119060-1M	1 x19	316	6	\$4.70
707080-1M	7 x 7	316	8	\$6.70

Stainless Steel Fittings

Open Turnbuckles



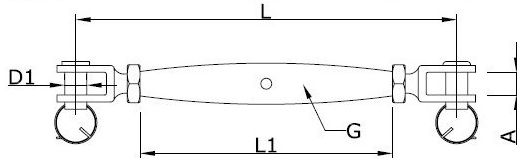
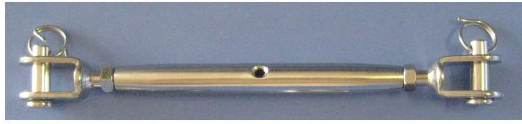
Stock Code	Style	Grade	Size mm	L mm	L1 mm	Price
1018-4	Hook and Eye	316	4	60	90	\$3.50
1018-5	Hook and Eye	316	5	70	120	\$3.50
1018-6	Hook and Eye	316	6	90	150	\$5.50
1018-8	Hook and Eye	316	8	120	185	\$9.50
1018-10	Hook and Eye	316	10	150	235	\$12.50
1018-12	Hook and Eye	316	12	200	300	\$18.00
1018-16	Hook and Eye	316	16	250	380	\$45.00
2018-4	Eye and Eye	316	4	60	90	\$3.50
2018-5	Eye and Eye	316	5	70	120	\$3.50
2018-6	Eye and Eye	316	6	90	150	\$5.50
2018-8	Eye and Eye	316	8	120	185	\$9.50
2018-10	Eye and Eye	316	10	150	250	\$12.50
2018-12	Eye and Eye	316	12	200	300	\$18.00
2018-16	Eye and Eye	316	16	250	405	\$45.00
3018-5	Hook and Hook	316	5	70	120	\$3.50
3018-6	Hook and Hook	316	6	90	150	\$5.50
3018-8	Hook and Hook	316	8	120	185	\$9.50
3018-10	Hook and Hook	316	10	150	235	\$12.50
4018-6	Jaw and Jaw	316	6	90	150	\$6.00
4018-8	Jaw and Jaw	316	8	120	185	\$12.00
5018-6	Body only	316	6	90		\$3.00
5018-8	Body only	316	8	120		\$6.00

Other sizes and combinations available on request.

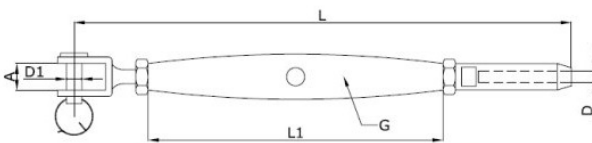
Closed Turnbuckles – Wood screw/swage



Stock Code	Style	Grade	Size mm	Wire Size mm	L mm	L1 mm	Price
024-6-W	Wood screw - Swage	316	6	3.2	200	95	\$9.95

Closed Turnbuckles – Jaw/Jaw

Stock Code	Style	Grade	Size mm	L mm	L1 mm	D1 mm	A mm	Price
023-5	Jaw - Jaw	316	5	130	80	5	8	\$6.00
023-6	Jaw - Jaw	316	6	145	92	6	9	\$8.00
023-8	Jaw - Jaw	316	8	167	105	8	11	\$12.50
023-10	Jaw - Jaw	316	10	195	125	10	13	\$23.00
023-12	Jaw - Jaw	316	12	240	150	12	15	\$30.00
023-16	Jaw - Jaw	316	16	310	190	16	19	\$70.00
123-6	Body only	316	6		92	6		\$3.00
123-8	Body only	316	8		105	8		\$6.00
223-6	Jaw (left or right)	316	6	77		6	9	\$2.70
223-8	Jaw (left or right)	316	8	90		8	11	\$3.50

Closed Turnbuckles – Jaw/swage

Stock Code	Style	Grade	Size mm	Wire Size mm	L mm	L1 mm	D1 mm	A mm	Price
024-5-25	Jaw - Swage	316	5	2.5	158	80	5	8	\$6.00
024-5	Jaw - Swage	316	5	3.2	158	80	5	8	\$6.00
024-6	Jaw - Swage	316	6	3.2	180	95	6	9	\$8.00
024-6-4	Jaw - Swage	316	6	4	180	95	6	9	\$9.00
024-8	Jaw - Swage	316	8	5	205	105	8	11	\$13.50
024-12-6	Jaw - Swage	316	12	6	290	150	12	15	\$27.00
024-12-8	Jaw - Swage	316	12	8	300	150	12	15	\$32.00
024-20-10	Jaw - Swage	316	20	10	410	210	20	23	\$115.00

We can swage your fittings for you – ask for a quote.

Swageless Fittings

Swageless Turnbuckle



Stock Code	Style	Grade	Size mm	Wire Size mm	Price
3045-6a	Swageless Turnbuckle	316	6	3.2	\$19
3045-6-4	Swageless Turnbuckle	316	6	4	\$22
3045-8-5	Swageless Turnbuckle	316	8	5	\$30
3045-16-8	Swageless Turnbuckle	316	16	8	\$120

Swageless Fork Terminal

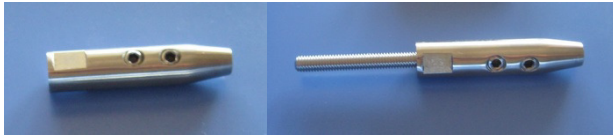


Stock Code	Style	Grade	Size mm	Wire Size mm	Price
0035-32	Swageless Fork Terminal	316	6	3.2	\$14
0035-4	Swageless Fork Terminal	316	6	4	\$16
0035-5	Swageless Fork Terminal	316	8	5	\$20
0035-8	Swageless Fork Terminal	316	12	8	\$70

Swageless Terminal Stud



Stock Code	Style	Grade	Size mm	Wire Size mm	Price
3035-6a	Swageless Stud Terminal	316	6	3.2	\$14
3035-6-4	Swageless Stud Terminal	316	6	4	\$16
3035-8-5	Swageless Stud Terminal	316	8	5	\$20
3035-16-8	Swageless Stud Terminal	316	16	8	\$70

Swageless Thread Terminal

Stock Code	Style	Grade	Size mm	Wire Size mm	Price
3056-6	Swageless Thread Terminal	316	6	1.6 to 3.2	\$13.00
3056-6a	Swageless Thread Terminal Stud	316	6	1.6 to 3.2	\$14.00

Swageless Thread Turnbuckle

Stock Code	Style	Grade	Size mm	Wire Size mm	Price
3056-6T	Swageless Thread Turnbuckle	316	6	1.6 to 3.2	\$19.00

Terminals

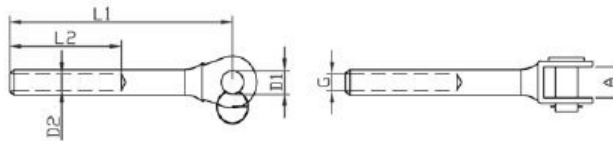
Swage Stud Terminal



Stock Code	Style	Grade	Size mm	Wire Size mm	Price
00039-32-6L	Stud swage terminal - Left thread	316	6	3.2	\$3.00
00039-32-6R	Stud swage terminal - Right thread	316	6	3.2	\$3.00
00039-32-6RXL	Stud swage terminal - Right thread Extra long 75mm thread	316	6	3.2	\$3.50
00039-32-5R	Stud swage terminal - Right thread	316	5	3.2	\$3.00
00039-25-5R	Stud swage terminal - Right thread	316	5	2.5	\$3.00
00039-40-6R	Stud swage terminal - Right thread	316	6	4	\$4.00
00039-40-6L	Stud swage terminal - Left thread	316	6	4	\$4.00
00039-50-8R	Stud swage terminal - Right thread	316	8	5	\$5.00
00039-60-12R	Stud swage terminal - Right thread	316	12	6	\$9.40
00039-80-12R	Stud swage terminal - Right thread	316	12	8	\$12.50

We can swage your fittings for you – ask for a quote.

Fork Swage Terminal



Stock Code	Style	Grade	Wire Size mm	L1 mm	L2 mm	D1 mm	A mm	Price
031-25	Jaw - Swage	316	2.5	55	22	5	8	\$3.00
031-32	Jaw - Swage	316	3.2	66	38	5	8	\$3.00
031-4	Jaw - Swage	316	4	72	47	6	10.5	\$4.00
031-4-8	Jaw - Swage	316	4	79	42	8	11	\$4.00
031-5	Jaw - Swage	316	5	88	55	9	12.5	\$5.70
031-6	Jaw - Swage	316	6	108	65	12	15	\$12.75
031-8	Jaw - Swage	316	8	150	85	14	17	\$16.75



Swage Eye Terminal

Stock Code	Style	Grade	Wire Size mm	Price
46525	Swage eye terminal	316	2.5	\$2.50
46503	Swage eye terminal	316	3.2	\$3.00
46504	Swage eye terminal	316	4	\$4.00
46505	Swage eye terminal	316	5	\$5.00

Woodscrew Swage Terminal

Stock Code	Style	Grade	Size mm	Thread	Wire Size mm	Price
04039-32-6L	Woodscrew swage terminal	316	6	Left	3.2	\$3.00
04039-32-6R	Woodscrew swage terminal	316	6	Right	3.2	\$3.00

We can swage your fittings for you – ask for a quote.



End Terminal

Stock Code	Style	Grade	Wire Size mm	Price
058-3	Dome head terminal	316	3.2	\$3.00
058-4	Dome head terminal	316	4	\$3.30

Eye Screws

Stock Code	Style	Grade	Size mm	Thread mm	Length mm	Price
05037-6-40	Eye Screw	316	6	35	40	\$1.50
05037-6-60	Eye Screw	316	6	40	60	\$2.00
05037-8-80	Eye Screw	316	8	55	80	\$2.75
05037-10-80	Eye Screw	316	10	60	80	\$3.50
05038-6-60	Welded Big Eye Screw	316	6	50	60	\$2.00
05038-8-80	Welded Big Eye Screw	316	8	80	80	\$3.00
05038-8-80A	Welded Big Eye Screw	316	8	45	80	\$3.00
05039-6-85	Welded Small Eye Screw	316	6	45	85	\$2.70
05039-8-85	Welded Medium Eye Screw	316	8	45	85	\$3.00
ESDB1	Eye Screw Drive Bit	316	Standard hex drive bit			\$15.00

Eye Bolts



Stock Code	Style	Grade	Size mm	Thread mm	Length mm	Price
0090-6-15	Eye Bolt	316	6	10	15	\$1.50
0090-6-20	Eye Bolt	316	6	15	20	\$1.50
0090-6-55	Eye Bolt	316	6	51	55	\$2.00
0090-8-80	Eye Bolt	316	8	70	80	\$3.50



Stock Code	Style	Grade	Size mm	Thread mm	Length mm	Price
0091-6-40R	Eye Bolt with nut and washer	316	6	35	40	\$1.60
0091-6-60	Eye Bolt with nut and washer	316	6	60	67	\$2.00
0091-6-100	Eye Bolt with nut and washer	316	6	100	105	\$3.00
0091-8-60a	Eye Bolt with nut and washer	316	8	60	70	\$3.50
0091-8-100a	Eye Bolt with nut and washer	316	8	100	100	\$4.50
0091-8-100	Collar Eye Bolt with nut & washer	316	8	100	140	\$5.00
0091-8-130	Collar Eye Bolt with nut & washer	316	8	130	170	\$5.00
0091-10-150	Collar Eye Bolt with nut & washer	316	10	150	200	\$8.00
0091-12-200	Collar Eye Bolt with nut & washer	316	12	200	260	\$15.00
0091-16-200	Collar Eye Bolt with nut & washer	316	16	200	275	\$17.50
0091-16-200a	Eye Bolt with nut & washer	316	16	200	275	\$17.50
0091-16-250	Collar Eye Bolt with nut & washer	316	16	250	325	\$19.50

Other sizes available on request.



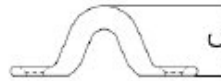
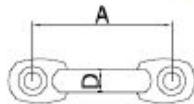
DIN580 Eye Bolt with Collar

Stock Code	Style	Grade	Size mm	Thread mm	Length mm	Price
DIN580-6	Eye Bolt with collar	316	6	12	40	\$2.00
DIN580-8	Eye Bolt with collar	316	8	15	50	\$3.00
DIN580-10	Eye Bolt with collar	316	10	18	60	\$4.00
DIN580-12	Eye Bolt with collar	316	12	22	75	\$8.00
DIN580-16	Eye Bolt with collar	316	16	26	88	\$13.50

Other sizes available on request.

DIN582 Eye Nut with Collar

Stock Code	Style	Grade	Size mm	Price
DIN582-6	Eye Nut with collar	316	6	\$1.75
DIN582-8	Eye Nut with collar	316	8	\$2.50
DIN582-10	Eye Nut with collar	316	10	\$3.50
DIN582-12	Eye Nut with collar	316	12	\$7.00
DIN582-16	Eye Nut with collar	316	16	\$12.00

Saddles

Stock Code	Grade	Size mm	A mm	C mm	D mm	Price
094-5	316	5	39	17	5	\$0.75
094-6	316	6	46	22	6	\$1.20

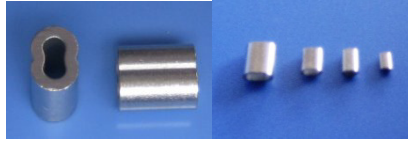
Eye Plate

Stock Code	Style	Grade	Size mm	W mm	L mm	H mm	T mm	Price
093-5	Oval	316	5	13	45	20	5	\$2.25
092-8	Oblong	316	8	40	50	33	8	\$3.90

Thimbles

Stock Code	Style	Wire Size mm	Grade	Price
052-2	Thimble	2	316	\$0.25
052-25	Thimble	2.5	316	\$0.25
052-32	Thimble	3.2	316	\$0.30
052-4	Thimble	4	316	\$0.45
052-5	Thimble	5	316	\$0.75
052-6	Thimble	6	316	\$0.85
052-8	Thimble	8	316	\$1.20
052-10	Thimble	10	316	\$1.50
052-12	Thimble	12	316	\$2.30
052-16	Thimble	16	316	\$4.00

Ferrules



Stock Code	Style	Wire Size mm	Price
7040-1.5	Duplex ferrule - Nickel plated copper	1.5	\$0.50
7040-2	Duplex ferrule - Nickel plated copper	2	\$0.65
7040-2.5	Duplex ferrule - Nickel plated copper	2.5	\$0.70
7040-3.2	Duplex ferrule - Nickel plated copper	3.2	\$0.75
7040-4	Duplex ferrule - Nickel plated copper	4	\$1.25
7040-5	Duplex ferrule - Nickel plated copper	5	\$2.20
7040-6	Duplex ferrule - Nickel plated copper	6	\$3.50
7040-8	Duplex ferrule - Nickel plated copper	8	\$4.50
7045-1	Ferrule – 316 Stainless Steel	1	\$0.40
7045-1.5	Ferrule – 316 Stainless Steel	1.5	\$0.50
7045-2	Ferrule – 316 Stainless Steel	2	\$0.65
7045-2.5	Ferrule – 316 Stainless Steel	2.5	\$0.75
7045-3	Ferrule – 316 Stainless Steel	3 or 3.2	\$0.90
7045-4	Ferrule – 316 Stainless Steel	4	\$1.25
7050-1.5	Ferrule – Aluminium	1.5	\$0.15
7050-2	Ferrule – Aluminium	2	\$0.20
7050-3	Ferrule – Aluminium	3 or 3.2	\$0.20
7050-4	Ferrule – Aluminium	4	\$0.25
7050-5	Ferrule – Aluminium	5	\$0.30
7050-6	Ferrule – Aluminium	6	\$0.50
7050-8	Ferrule – Aluminium	8	\$0.75
7050-10	Ferrule – Aluminium	10	\$1.00
7060-1.5	Stopper Ferrule – Copper	1.5	\$0.30
KH034-1.5	Stopper – Aluminium	1.5	\$0.30
KH034-1.2	Stopper–Aluminium	1.2	\$0.30

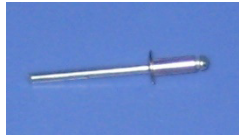
Other sizes and grades available on request.

Screws



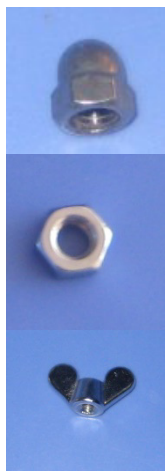
Stock Code	Grade	Style	Length mm	Size mm	Price
6GX114	304	Countersunk, Phillips head, self tapper	1 1/2in(32mm)	6G	\$0.10
6GX1	316	Countersunk, Phillips head, self tapper	25mm	6G	\$0.15
8GX114	304	Countersunk, Phillips head, self tapper	1 1/2in(32mm)	8G	\$0.10
8GX134	304	Countersunk, Phillips head, self tapper	44mm	8G	\$0.15
10GX114	304	Countersunk, Phillips head, self tapper	1 1/2in(32mm)	10G	\$0.15
10GX12	304	Countersunk, Phillips head, self tapper	50mm	10G	\$0.25
SOCM6x25	316	Socket screw, Button Head	25mm	M6	\$0.35

Pop Rivets



Stock Code	Grade	Style	Size mm	Grip mm	Price
POP4-8	304	Pop Rivet	4 * 8	4mm	\$0.10
POP4-10	304	Pop Rivet	4 * 10	6mm	\$0.20
POP4-13	304	Pop Rivet	4 * 13	10mm	\$0.25

Nuts



Stock Code	Grade	Style	Thread	Size mm	Price
DNUT-6	316	Dome Nut	Right	6	\$0.50
DNUT-8	316	Dome Nut	Right	8	\$0.80
DNUT-10	316	Dome Nut	Right	10	\$1.30
DNUT-12	316	Dome Nut	Right	12	\$2.00
DNUT-16	316	Dome Nut	Right	16	\$2.20
HNUT-5R	316	Hex Nut	Right	5	\$0.05
HNUT-6R	316	Hex Nut	Right	6	\$0.10
HNUT-6L	316	Hex Nut	Left	6	\$0.10
HNUT-8R	316	Hex Nut	Right	8	\$0.15
HNUT-8L	316	Hex Nut	Left	8	\$0.20
HNUT-10R	316	Hex Nut	Right	10	\$0.30
HNUT-10L	316	Hex Nut	Left	10	\$0.40
HNUT-12R	316	Hex Nut	Right	12	\$0.60
HNUT-16R	316	Hex Nut	Right	16	\$1.20
WNUT-6	316	Wing Nut	Right	6	\$1.50
NYNUT-6	316	Nylock Nut	Right	6	\$0.10
NYNUT-8	316	Nylock Nut	Right	8	\$0.15
NYNUT-10	316	Nylock Nut	Right	10	\$0.30

Washers



Stock Code	Grade	Style	Size mm	Price
WASH-6	316	Washer	6	\$0.10
WASH-3-16	316	Washer	3/16 – 7/16"	\$0.10
WASH-6L	316	Large Washer	6	\$0.15
WASH-8	316	Washer	8	\$0.15
WASH-10	316	Washer	10	\$0.15
WASH-12	316	Washer	12	\$0.20
WASH-16	316	Washer	16	\$0.40

Split Nylon Grommets



Stock Code	Colour	OD mm	Price
GROM-B	Black	8.5	\$0.20
GROM-G	Grey	8.5	\$0.20

Blind Rivet Nut



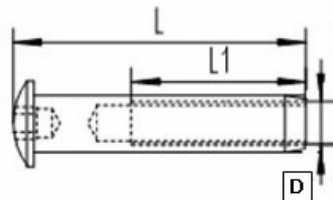
Stock Code	Grade	Thread	Size mm	Price
BRNUT-4R	304	Right	4	\$0.70
BRNUT-5R	304	Right	5	\$0.80
BRNUT-6R	304	Right	6	\$0.90
BRNUT-6L	304	Left	6	\$1.50
BRNUT-8R	304	Right	8	\$1.00
BRNUT-10R	304	Right	10	\$1.20

Green Wall



Stock Code	Style	Size	Grade	Wire size	Price
XCLIP-3	Cross Clip	16mm	316	Up to 3.2mm	\$5.50
XCLIP-4	Cross Clip	20mm	316	Up to 4mm	\$6.00
GWP	Greenwall Post	96mm	316	Up to 4mm	\$19.00
DTCS-835	Dual thread coach screw to suit Greenwall Post	70mm, M8 x 15mm	304		\$2.50

Tensioners



Stock Code	Grade	Style	D mm	L mm	L1 mm	Price
12040-5-48	316	Hex Dome head	5	42	30	\$3.70
12040-6-48	316	Hex Dome head	6	42	30	\$3.70
02050-6-50	316	Cone head	6	50	35	\$3.20

Wood Inserts



RHT

Stock Code	Grade	Size mm	Thread	Price
INSERT-6R	304	M6 x 32mm	Right	\$3.70
INSERT-6L	304	M6 x 32mm	Left	\$3.70
INSERT-8R	304	M8 x 32mm	Right	\$4.00

D Shackles



Stock Code	Style	Grade	Size mm	Price
00015	DEE	316	5	\$1.80
0001-6	DEE	316	6	\$2.00
0001-8	DEE	316	8	\$3.00
0001-10	DEE	316	10	\$5.20
0002-6	Long Dee	316	5	\$2.20
0002-6	Long Dee	316	6	\$3.20
0002-8	Long Dee	316	8	\$4.50
0002-6	Twisted Dee	316	6	\$3.70
0002-8	Twisted Dee	316	8	\$5.40
0003-5	Bow Shackle	316	5	\$1.80
0003-6	Bow Shackle	316	6	\$2.00
0003-8	Bow Shackle	316	8	\$3.00
0003-10	Bow Shackle	316	10	\$5.20
0003-20	Bow Shackle	316	20	\$50.00

Snap Hooks



Stock Code	Style	Grade	Size mm	Price
026-5	Snap Hook	316	5	\$1.80
026-6	Snap Hook	316	6	\$2.00
026-8	Snap Hook	316	8	\$3.00
026-8E	Snap hook with eye	316	8	\$3.50
026-10E	Snap hook with eye	316	10	\$5.00
028-FSS52	Fixed snap shackle	316	12x52	\$5.00
028-FSS66	Fixed snap shackle	316	16x66	\$7.00

Quick Links



Stock Code	Style	Grade	Size mm	Price
027-6	Quick Link	316	6	\$2.90
027-8	Quick Link	316	8	\$4.90
027-10	Quick Link	316	10	\$9.00

Triangle Ring



Stock Code	Style	Grade	Size mm	Price
TRING-6	Triangle	316	6 x 50	\$1.50

Round Ring



Stock Code	Style	Grade	Size mm	Price
RRING-8-75	Round	316	8 x 75	\$4.00

D Ring



Stock Code	Style	Grade	Size mm	Price
66330	Dee Ring	316	3 x 30	\$0.75
66435	Dee Ring	316	4 x 35	\$1.00
66530	Dee Ring	316	5 x 30	\$1.20
66650	Dee Ring	316	6 x 50	\$1.60

Swivels



Stock Code	Style	Grade	Size mm	Price
76106	Eye / eye	316	6	\$3.00
76108	Eye / eye	316	8	\$5.75
76306	Jaw / jaw	316	6	\$5.20
76308	Jaw / jaw	316	8	\$8.20

Wire Rope Clips



Stock Code	Grade	Size mm	Price
059-2	316	2	\$1.20
059-3	316	3	\$1.50
059-4	316	4	\$1.60
059-5	316	5	\$1.70
059-6	316	6	\$2.00
059-8	316	8	\$2.50
059-10	316	10	\$3.00

Threaded Rod

Stock Code	Description	Grade	Size mm	Thread	Price
ROD-6-55	Threaded rod	316	M6 x 55mm	Right	\$0.70
ROD-6-100	Threaded rod	316	M6 x 100mm	Right	\$1.00
ROD-6	Threaded rod	316	M6 x 1 metre	Right	\$4.00
ROD-8-75	Threaded rod	316	M8 x 75mm	Right	\$1.00
ROD-8	Threaded rod	316	M8 x 1 metre	Right	\$6.50
ROD10	Threaded rod	316	M10 x 1 metre	Right	\$10.00
ROD-16	Threaded rod	316	M16 x 1 metre	Right	\$32.00
1039-6	Double thread stubs	316	M6 x 70mm	Right	\$3.60
DTCS-835	Dual thread coach screws	304	70mm, M8 x 35mm	Right	\$2.00

Chain – Australian Standard



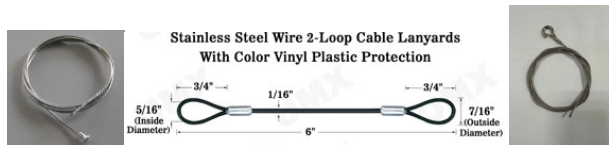
Stock Code	Description	Grade	Size mm	Price Per metre	Price 25kg Drum
CH6	Medium link 11mm x 26mm inner dia	316	6mm	\$14.30	\$415
CH8	Medium link 13mm x 32mm inner dia	316	8mm	\$24.00	\$415

Cable Grippers



Stock Code	Description	Size	Suit Wire size	Price
TWCG-15	Two way cable gripper Aluminium	20 x 20 x 10mm	1mm to 1.6mm	\$3.50
HP022	Ceiling cable gripper	16 x 28mm	1mm to 1.6mm	\$3.50
HP007	Cable gripper with hook	9mm x 25mm with 22mm hook	1mm to 1.6mm	\$3.00
XR155-CG	Cable gripper with captive hook	9mm x 26mm with 26mm hook	2mm	\$5.75
YY003	Cable gripper with slot	9mm x 26mm	1mm to 1.6mm	\$3.00
YY013	Cable gripper with thread. (nut & lock washer extra \$0.30)	9mm x 24mm with M5 x 11mm thread	1mm to 1.6mm	\$3.00
RH001	Ceiling Attachment	15mm x 15mm	1mm to 1.6mm	\$2.50
MK-018	Ceiling Attachment	16mm x 17mm	1mm to 1.6mm	\$2.50

Suspension cable assembly



Stock Code	Description	Grade	Size	Price
KH033-1	1mtr suspension cable with stopper	304	1mtr x 1.5mm	\$1.50
KH033-2	2mtr suspension cable with stopper	304	2mtr x 1.5mm	\$2.50
GX2-4-H002	2mm Galv wire x 4mtr with H002 hook	Galv	4mtr x 2mm	\$5.75
TWL150	Two loop lanyard – white plastic coated stainless steel		150mm x 1.5mm	\$5.00

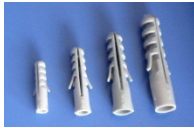
We custom make cables to any size

Anti-Seize



Stock Code	Style	Size	Price
LB8060	Loctite anti-seize stick prevents binding on stainless steel threads	20g	\$31.00

Plugs



Stock Code	Description	Size	Price
P630	Plastic plug to suit 6g and 8g screws	6mm x 30mm	\$0.10
P840	Plastic plug to suit 5mm or 6mm screws	8mm x 40mm	\$0.10
P1050	Plastic plug to suit 6mm or 8mm screws	10mm x 50mm	\$0.15
P1260	Plastic plug to suit 8mm or 10mm screws	12mm x 60mm	\$0.25

Cable Ties



Stock Code	Description	Size	Price 100 pack	Price each
CT46X150	316 grade stainless	4.6mm x 150mm	\$35	\$0.50
CT46X200	316 grade stainless	4.6mm x 200mm	\$40	\$0.60
CT46X250	316 grade stainless	4.6mm x 250mm	\$45	\$0.70

Other sizes up to 1100mm available.

Drill Bits



Stock Code	Size mm	Quantity per pack	Price
61216	3	2	\$5
61218	3.2	2	\$5
61221	3.5	2	\$5
61226	4	2	\$6
61236	5	2	\$7
61241	5.5	2	\$8
61246	6	1	\$5
61256	7	1	\$7
61258	7.5	1	\$7.50
61259	8	1	\$8
61260	8.5	1	\$10
61261	9	1	\$10.50
61262	9.5	1	\$11
61263	10	1	\$11.50

Tools

Crimping tools



Stock Code	Description	Size mm	Price
HL-700B	Hand swaging tool for wire up to 1.6mm	260	\$37.00
HX-50	Hand swaging tool for Terminal S7807-03S used in a flip lock system.	390	\$120.00
HS14	Hand swaging tool Crimps size 1mm to 3.2mm Cuts wire up to 3.2mm	440	\$85.00
HS24	Heavy duty hand swaging tool Crimps five crimp sizes from 1mm to 5mm Cuts wire up to 5mm	600	\$120.00
HP70C	Hand hydraulic swaging tool Suitable to crimp 1x19 stainless wire 2.5mm and 3.2mm		\$300.00
CTL4	Hydraulic swaging tool 25 tonne output Suitable to crimp stainless wire from 2.5mm to 5mm Hydraulic hand pump and hose \$? Dies \$? each Total for swaging tool, pump, die for 3.2mm wire \$?		\$call

Cable Cutter



Stock Code	Description	Size mm	Price
TX102	Hand wire cutting tool. Cuts wire up to 4mm	200	\$20.00
A8	Hand wire cutting tool. Cuts wire up to 4mm	200	\$30.00
SCC60	Hand wire cutting tool. Cuts wire up to 5mm High Quality	310	\$97.00
SCC100	Hand wire cutting tool. Cuts wire up to 8mm High Quality	600	\$130.00

Blind Rivet Nut Insert Tool

Stock Code	Description	Size	Price
F4	Inserts rivet nuts M4, M5, M6, M8	490mm	\$275
MAN-6L	mandrill for inserting M6 left thread rivet nuts	M6	\$20.00

Heavy Duty Hand Rivet Tool

Stock Code	Description	Size	Price
MR06	Long arm rivet tool for use with 3.2mm, 4mm, 4.8mm 6.4 mm stainless steel rivets	510mm	\$75.00

Wire Tension Gauge

Stock Code	Description	Price
WTG-01	Suitable for 2.5mm, 3mm, 3.2mm and 4mm 1x19 and 7x7 wire rope	\$95

Spanners

Stock Code	Description	Size mm	Price
Multi	For tensioning turnbuckles and terminals	100mm Suits M5 and M6	\$15
TT-Tool	For tensioning turnbuckles and terminals	70mm Suits M5 and M6	\$10